

It's easy! Position your artwork on the uppermost layer.



Promotional Products Artwork Template

Post-it® Brand Designer 2 Dispenser: TFD2D1 – 1" Single CATALOG QUANTITY ORDER SETUP

GENERAL INSTRUCTIONS

1. Please give us your name and any known order details in the box above/left.
2. Create or locate your artwork in the top layer. Note: some other layers are non-printing layers and will not appear on any proofs you print.
TIP: Hide/show the non-printing layers as needed during layout work; please do not delete the non-printing layers prior to saving file.
3. All guides and dimensions shown here are at 100%.
4. Convert text to graphics (create outlines), even if fonts used are Adobe Postscript Type 1 fonts.
TIP: Keep a record of all fonts used. Because converted text is no longer editable as type, you may need your fonts for future revisions.
5. If any bitmap images are placed in this file, resulting in a "metafile" please do not modify the placed bitmap here. Also, be sure to "link" the file rather than parse (rasterize) it into this file, and also send the bitmap file together with this file.
6. Color swatches for 3M standard inks, papers, etc. can be downloaded at: www.3M.com/templates.
The swatches make it easy for you to apply the standard colors to your product design.
NOTE: You are not limited to the 3M standard ink colors. Paper and product colors are for design use only and need to be deleted or moved to a non-printing layer prior to delivering final art to 3M.
7. Do NOT perform any trapping.
8. Please save your completed file as an Illustrator Native File (.ai).
9. Please give your completed file a name that helps us identify it. (Examples: "Pepsicube.ai" or "PO#123.ai" ... not "notepads.pdf" or "Untitled")
10. Consult our "Before You Begin" PDF document for valuable tips and product/printing details.



Template: #TFD2D1_CatalogQtys

Issue Date: February 4, 2009 (Supercedes: August 3, 2006)

Note: Be sure to check our website for updated editions.

Go to: www.3M.com/templates



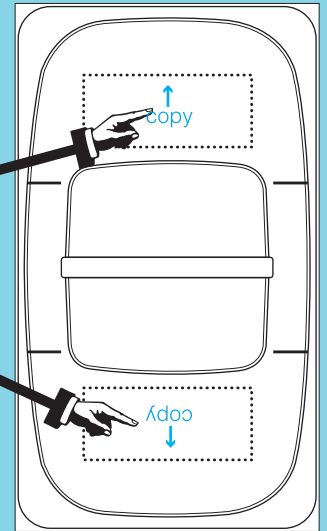
RESTRICTIONS

- Minimum type size: 6 point
- Minimum line width: 0.5 point

1

LAYOUT GUIDE FOR ARTWORK ON DESIGNER 2 DISPENSER SHELL (Imprint on outside of shell)

2 Imprint Areas
(denoted by black dotted lines)
.875" x .375"



*Need tech support ?
Refer to our “Before You Begin” PDF document.*