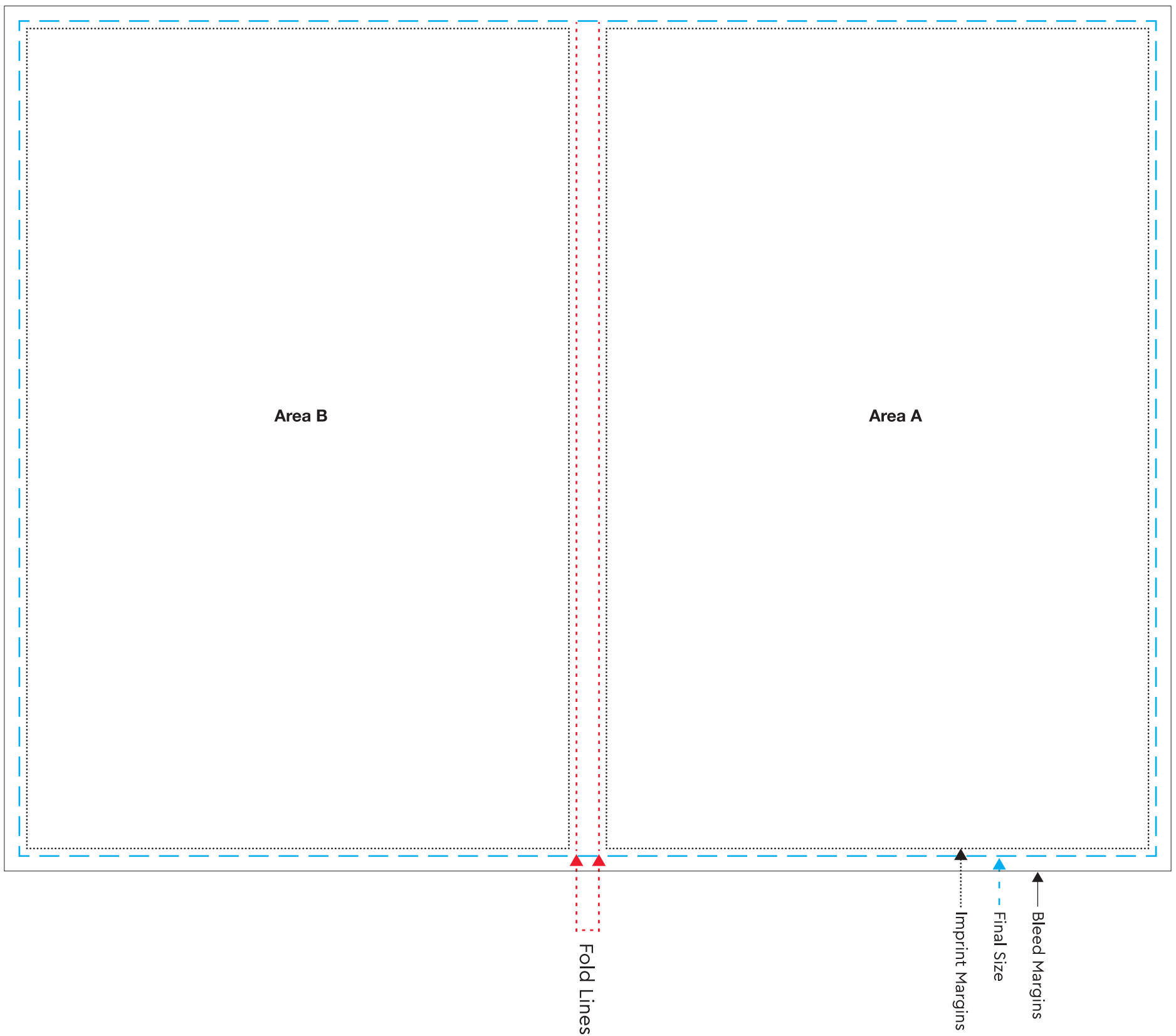




Extreme XL Notes with Cover PCXLEF — Outside



**RESTRICTIONS**

- No printing on Extreme Notes sheets.
- Post-it® Extreme Notes logo is pre-printed on inside cover.
- No imprint on the inside of Extreme Notes cover.
- Convert all imprint colors to CMYK (no spot or RGB colors).
- Bleeds should fill minimum bleed margins.

**Please be sure to notate on order which paper color you would like**

Approximate final size: 9.441"W x 8.5313"H

Bleed areas: 9.691"W x 6.939"H

Outside cover imprint areas (denoted by black dotted lines):

Area A: 4.5"W x 6.814"H

Area B: 4.5"W x 6.814"H






custom printed products

Promotional Products  
Production Template

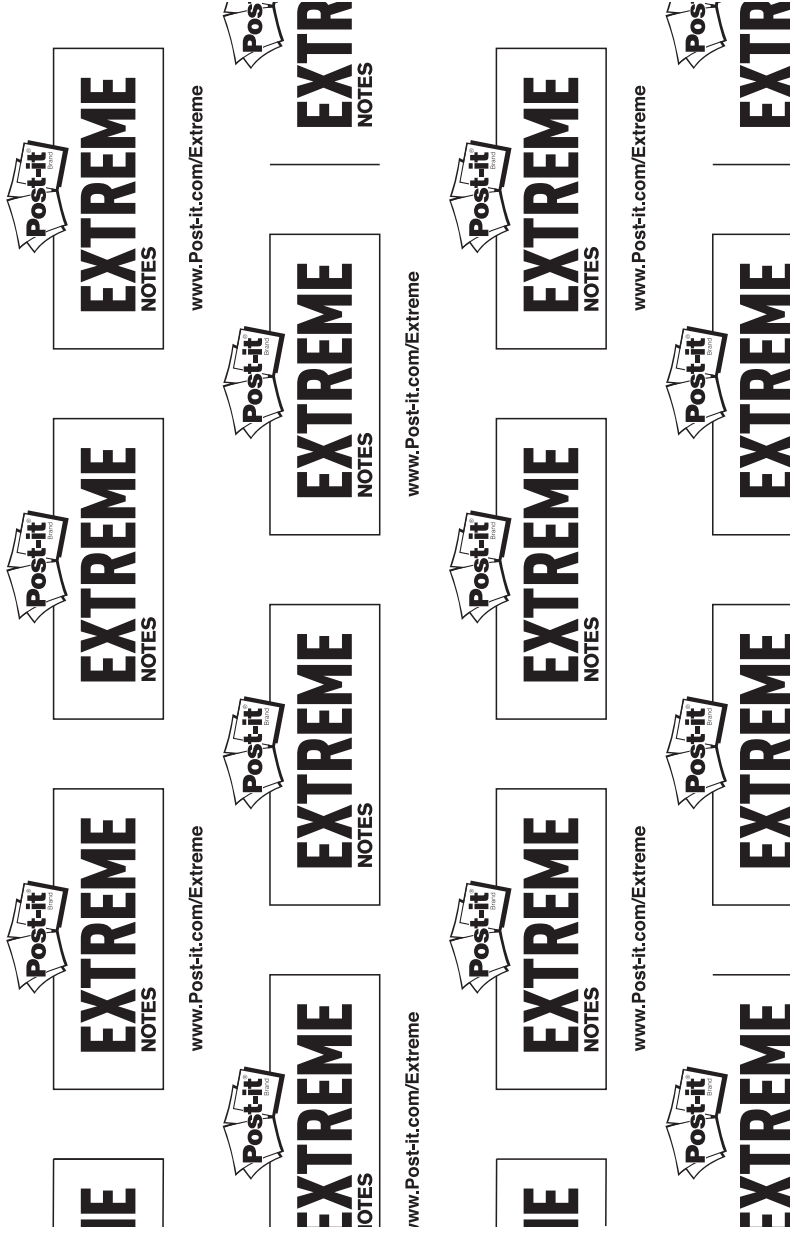
**Extreme XL Notes PCXLEF with Cover — Inside**  
Custom imprint on the inside cover is not available  
Text is pre-printed on the inside of the cover



**Made with ultra-strong  
Dura-Hold™ Paper and Adhesive**  
Use Indoor/Outdoor — Water resistant  
\*Apply to dry surface to hold in wet conditions

- Bleed-through resistant
- Maintains adhesion in Hot/Cold - Holds 0°-120°F
- Sticks to tough surfaces & in tough conditions

HACCP Certified \*\*Not recommended for use on paper



**RESTRICTIONS**

- No printing on Extreme Notes sheets.
- Post-it® Extreme Notes logo is pre-printed on inside cover.
- No imprint on the inside of Extreme Notes cover.
- Convert all imprint colors to CMYK (no spot or RGB colors).
- Bleeds should fill minimum bleed margins.

**Please be sure to notate on order  
which paper color you would like**

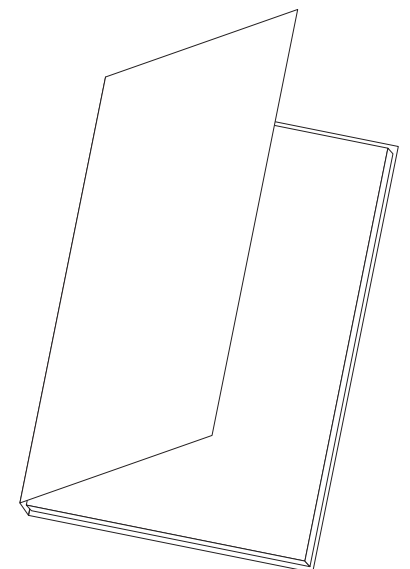
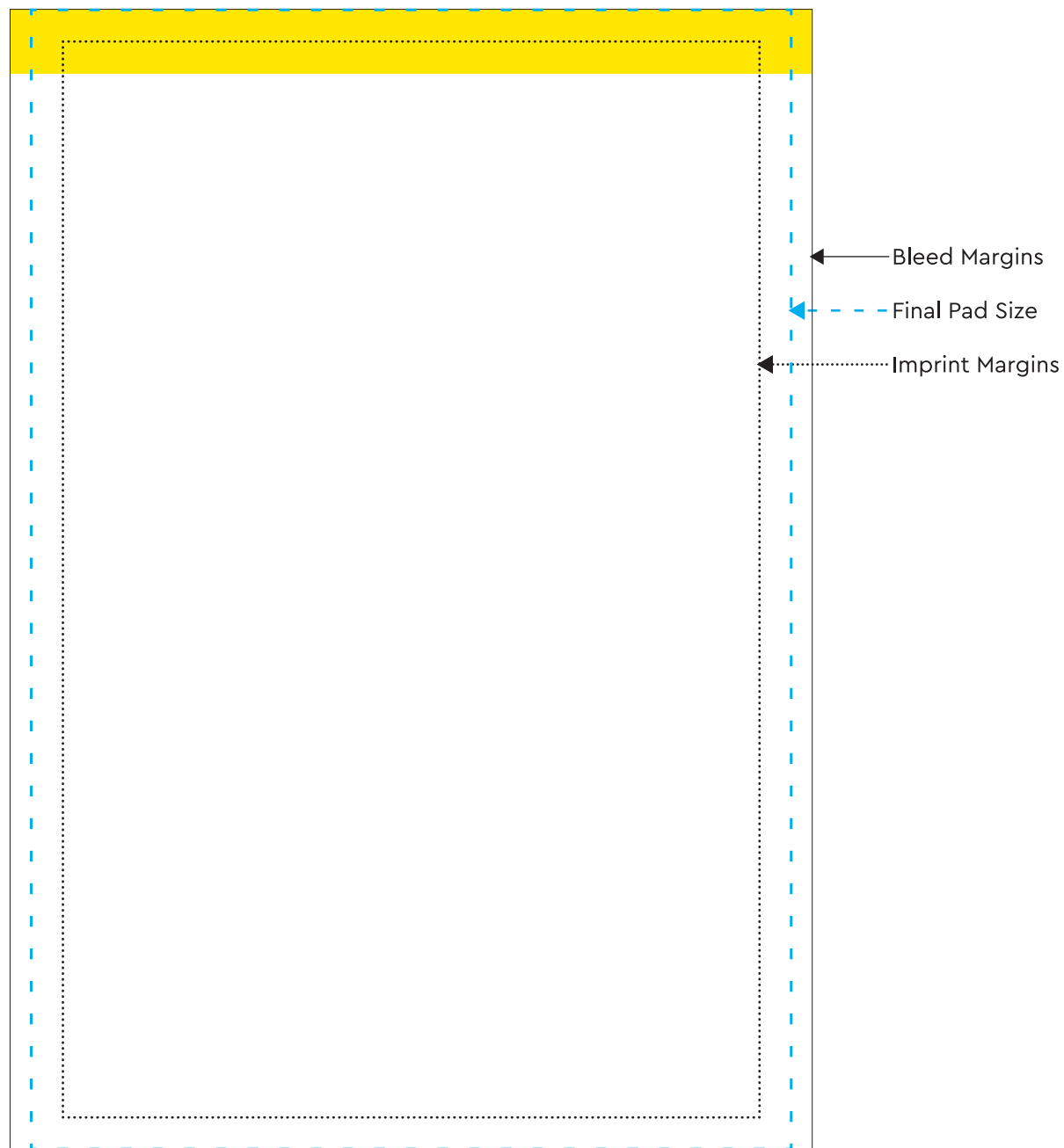
Approximate final size: 9.441"W x 8.5313"H

**Name:** Post-it® Extreme XL Notes with Cover — Inside of cover  
**Temp#:** PCXLEF  
**Issue date:** January 1, 2021 (Supercedes: July 15, 2019)  
**3M.com/promote**





Adhesive edge



**RESTRICTIONS**

- 1-color, Black ink recommended on Yellow, Green, Orange or Red papers
- 1 spot color or 4-color process on White paper only
- Keep text at/or above 4 pt. and not too thin.
- No ink screens.
- Cannot bleed uncommon off the top or bottom.
- Bleeds should at least begin at imprint margin and continue off, filling the minimum bleed margin.
- Logos, text or anything that needs to be guaranteed to print should be placed within the imprint margin.

**Please be sure to notate on order which paper color you would like**

Approximate Final Pad Size: 4.5"W x 6.75"H

Approximate Imprint Area: 4.125"W x 6.375"H

Approximate Common and Uncommon Bleed:

4.75"W x 6.875"H

**Beneath each sheet is adhesive area**