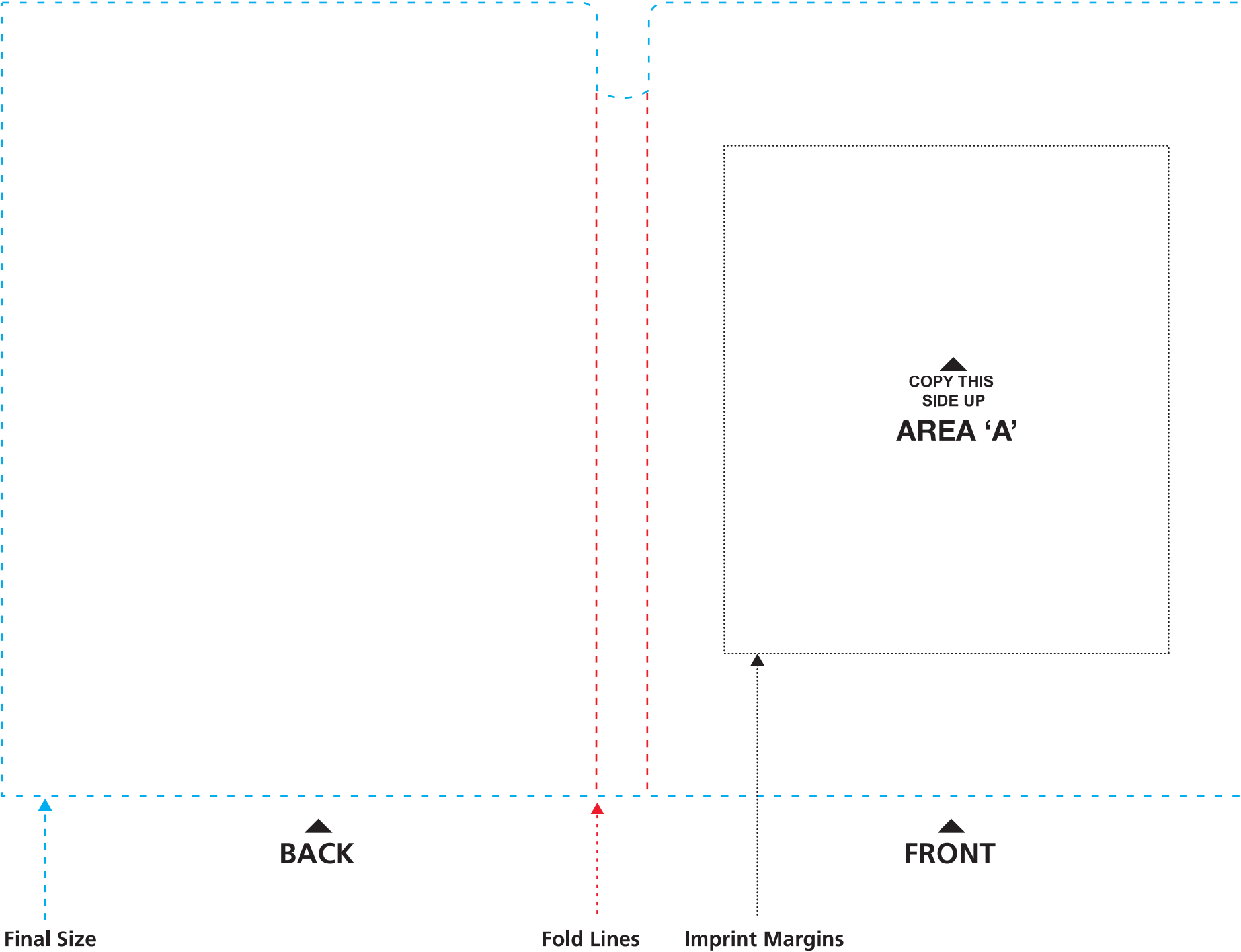




Essential Journal with Post-it® Notes
Journal Cover (Outside) — Full Color Digital, Spot Imprint



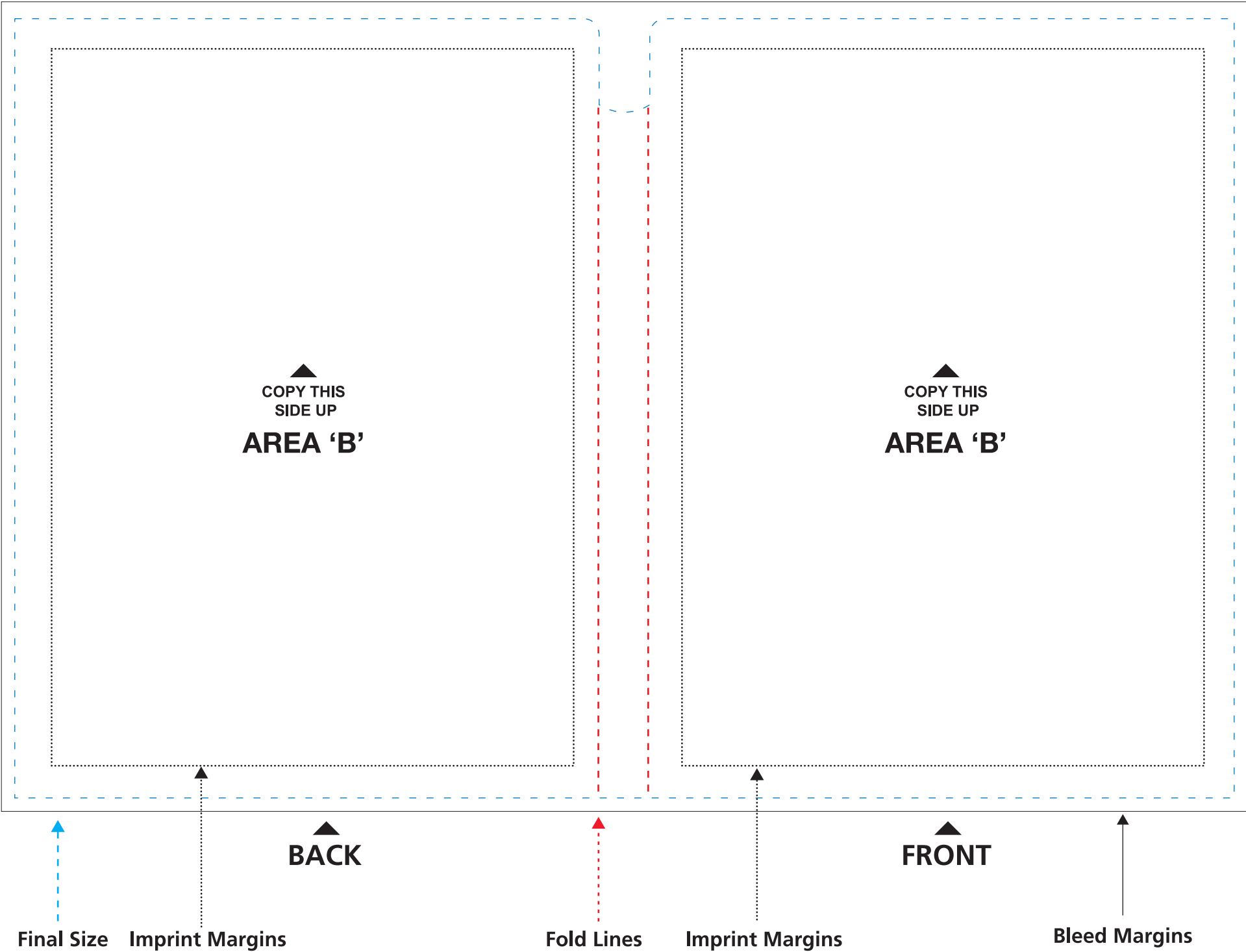
RESTRICTIONS

- Keep text at/or above 4 pt. and not too thin.
- TM and ® — minimum of 3 pt.
- Line thickness — minimum of .3 pt.
- Convert all colors to CMYK for digital printing.
- Logos, text or anything that needs to be guaranteed to print should be placed within the imprint margin.

Approximate Final size: 9.75"W x 6.25"H
Approximate Finished Folded Size: 4.75"W x 6.25"H
Approximate Imprint Area A: 3.5"W x 4"H
Fold Lines (denoted by red dashed lines)



Essential Journal with Post-it® Notes
Journal Cover (Outside) — Full Color Digital/Offset, Full Coverage Imprint



RESTRICTIONS

- Keep text at/or above 4 pt. and not too thin.
- TM and ® — minimum of 3 pt.
- Line thickness — minimum of .3 pt.
- Convert all colors to CMYK for digital printing.
- Logos, text or anything that needs to be guaranteed to print should be placed within the imprint margin.

Approximate Final size: 9.75"W x 6.25"H

Approximate Finished Folded Size: 4.75"W x 6.25"H

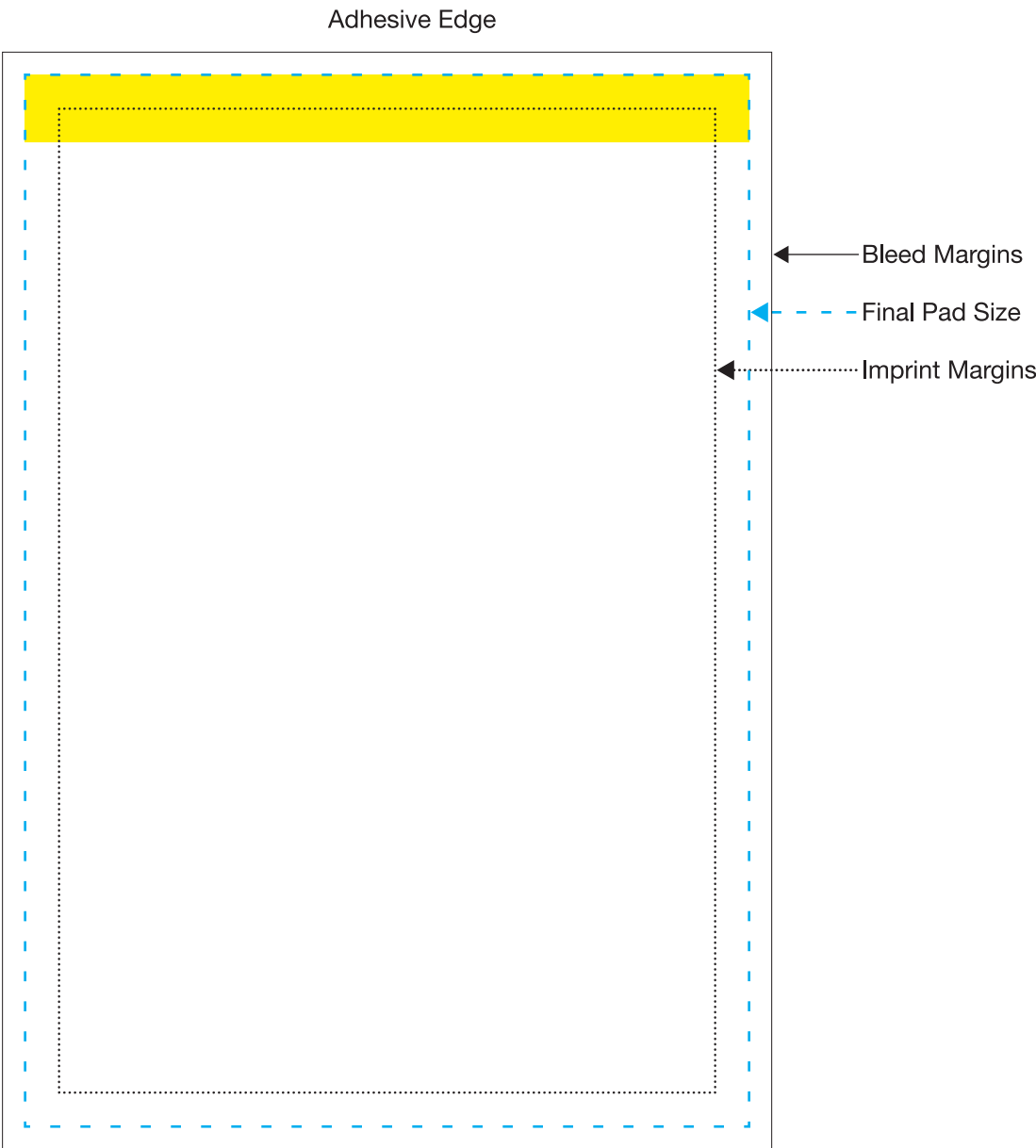
Bleed Area: Subject to limitations for printing and registration. Please inquire if necessary.

Approx. Imprint Area B: 4.1875"W x 5.75"H

Fold Lines (denoted by red dashed lines)



Essential Journal with Post-it® Notes
Printed 4 x 6 Note Pad



RESTRICTIONS

- Keep text at/or above 4 pt. and not too thin.
- TM and ® — minimum of 3 pt.
- Line thickness — minimum of .3 pt.
- Convert all colors to CMYK for digital printing.
- Logos, text or anything that needs to be guaranteed to print should be placed within the imprint margin.

Approximate Final Pad Size: 4"W x 5.812"H

Approximate Imprint Area: 3.625"W x 5.437"H

Approximate Bleed area: 4.25"W x 6.062"H

Beneath each sheet is adhesive area