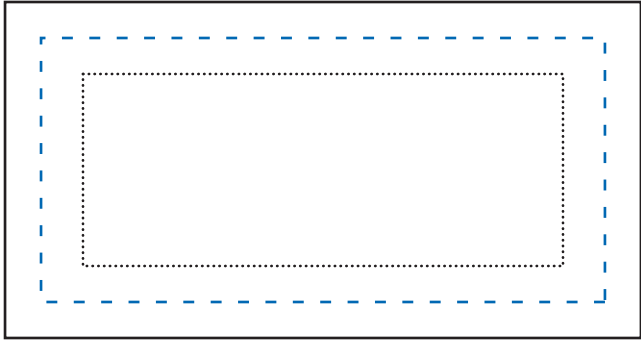


## Side Template - for Non/Wrapping artwork

Side A - Front



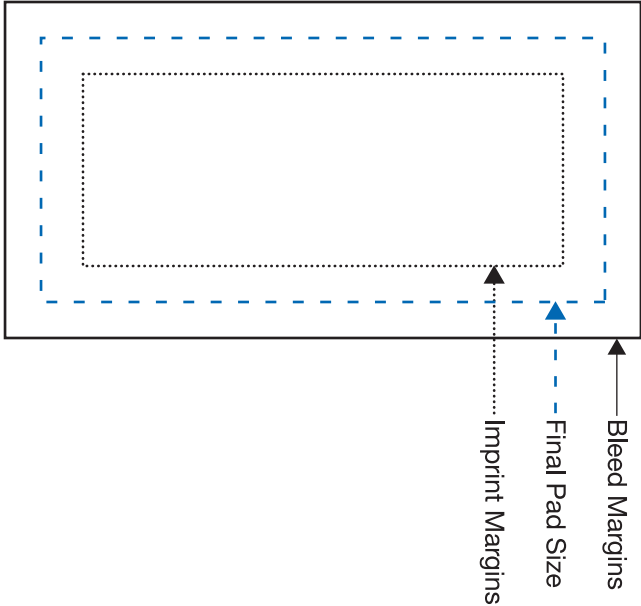
Side B - Right



Side C - Back



Side D - Left



### RESTRICTIONS: For Cube Sides ONLY

- Keep text at/or above 5pt. and not too thin. (6pt minimum for reversed copy)
  - TM and ® - minimum of 3pt (4pt reversed)
  - Line thickness - minimum of .5pt (1pt reversed)
  - Bleeds should begin at imprint margins continue off, filling the minimum bleed margin.
- Screens/Transparencies are not recommended on Spot print
  - Spot print should reference Pantone Uncoated Library.
  - Digital print should be in CMYK or from Pantone Uncoated.
  - Logos, text or anything that needs to be guaranteed to print should be placed within the imprint margin.

Approximate Cube Ft(A) & Bk(C) Side Sizes : 4"W x 1.375"H

Approximate Imprint Ft(A) & Bk(C) Area: 3.562"W x 1"H

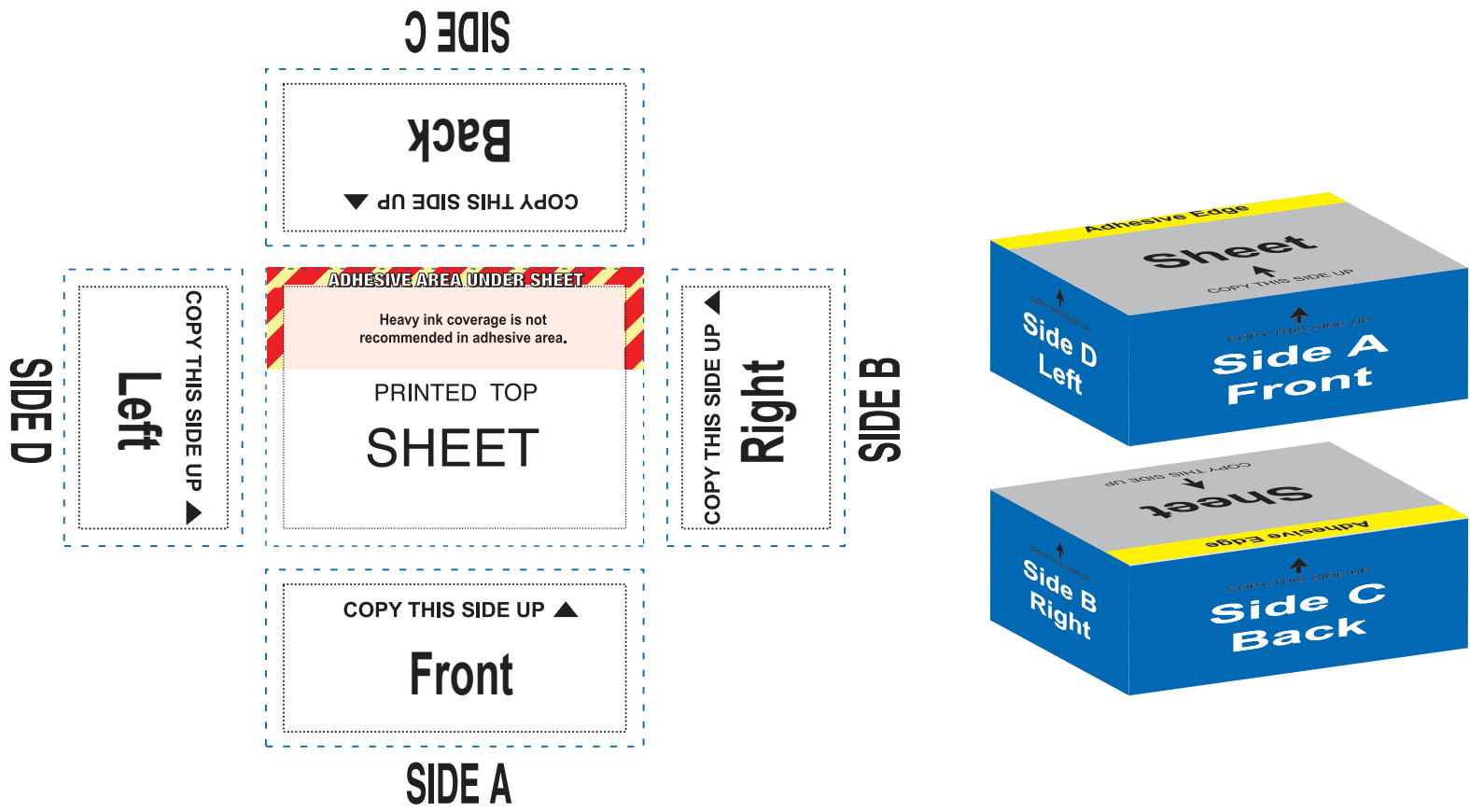
Approximate Bleed Ft(A) & Bk(C) Area: 4.375"W x 1.75"H

Approximate Cube Rt(B) & Lt(D) Sides Size: 2.937"W x 1.375"H

Approximate Imprint Rt(B) & Lt(D) Area: 2.5"W x 1"H

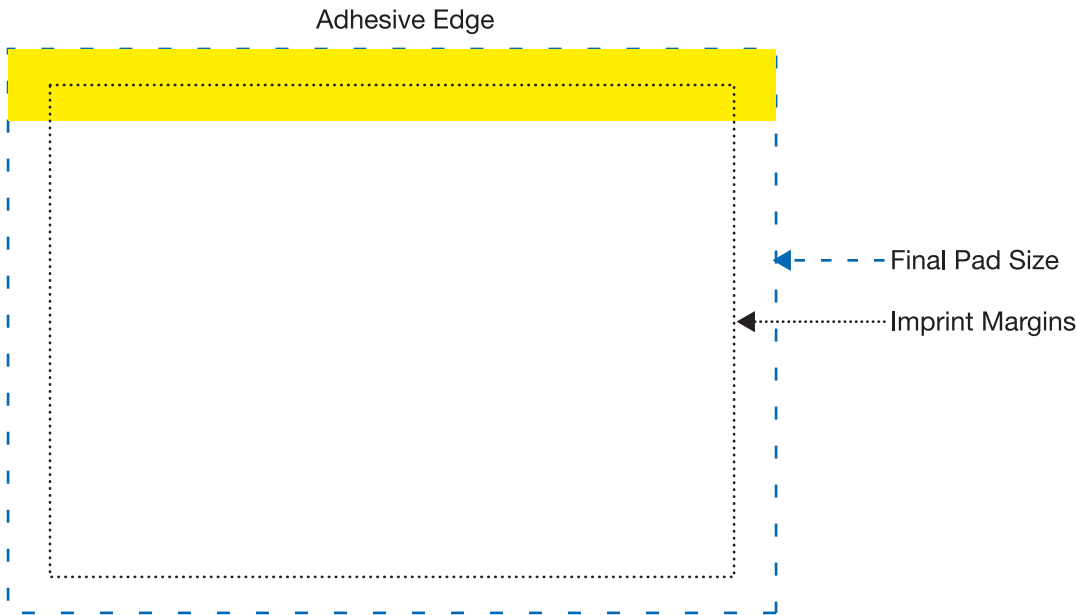
Approximate Bleed Rt(B) & Lt(D) Area: 3.312"W x 1.75"H

### Diagram



### Cube Sheets

No Bleeds on Cube Sheets



Approximate Cube Sheet Size : 4"W x 2.937"H

Approximate Imprint Area: 3.562"W x 2.562"H

### RESTRICTIONS: For Cube Sheet ONLY

- Keep text at/or above 4pt. and not too thin. (5pt minimum for reversed copy)
- TM and ® - minimum of 3pt (4pt reversed)
- Line thickness - minimum of .25pt (.5pt reversed)
- No Bleeds on cube sheets.
- Spot print should reference Pantone Uncoated Library.
- Digital print should be in CMYK or from Pantone Uncoated.
- Logos, text or anything that needs to be guaranteed to print should be placed within the imprint margin.

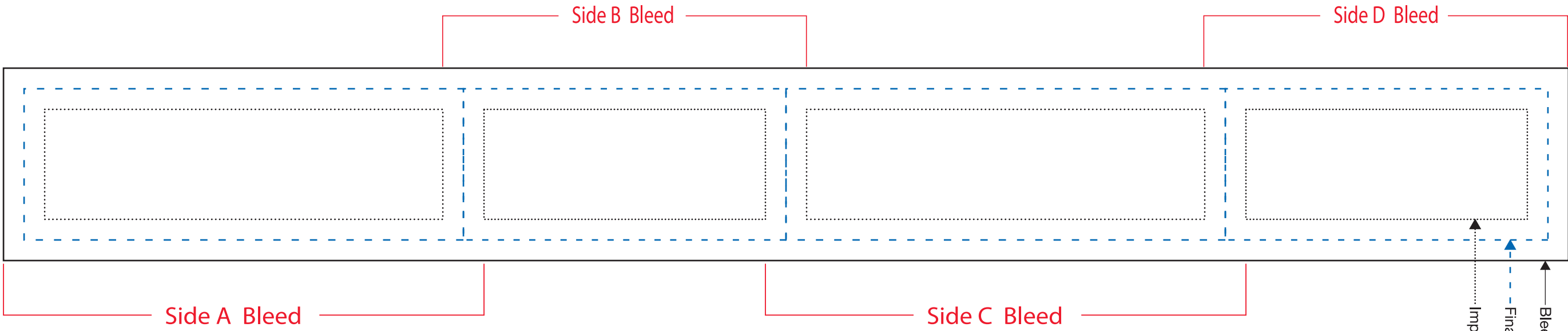
## Side Template - for Wrapping(Continuous) artwork

Side A - Front

Side B - Right

Side C - Back

Side D - Left



### RESTRICTIONS: For Cube Sides ONLY

- Keep text at/or above 5pt. and not too thin. (6pt minimum for reversed copy)
  - TM and ® - minimum of 3pt (4pt reversed)
  - Line thickness - minimum of .5pt (1pt reversed)
  - Bleeds should begin at imprint margins continue off, filling the minimum bleed margin.
- Screens/Transparencies are not recommended on Spot print
  - Spot print should reference Pantone Uncoated Library.
  - Digital print should be in CMYK or from Pantone Uncoated.
  - Logos, text or anything that needs to be guaranteed to print should be placed within the imprint margin.

Approximate Cube Ft(A) & Bk(C) Side Sizes : 4"W x 1.375"H

Approximate Imprint Ft(A) & Bk(C) Area: 3.625"W x 1"H

Approximate Bleed Area: 14.249" W x 1" H

Approximate Cube Rt(B) & Lt(D) Sides Size: 2.937"W x 1.375"H

Approximate Imprint Rt(B) & Lt(D) Area: 2.562"W x 1"H