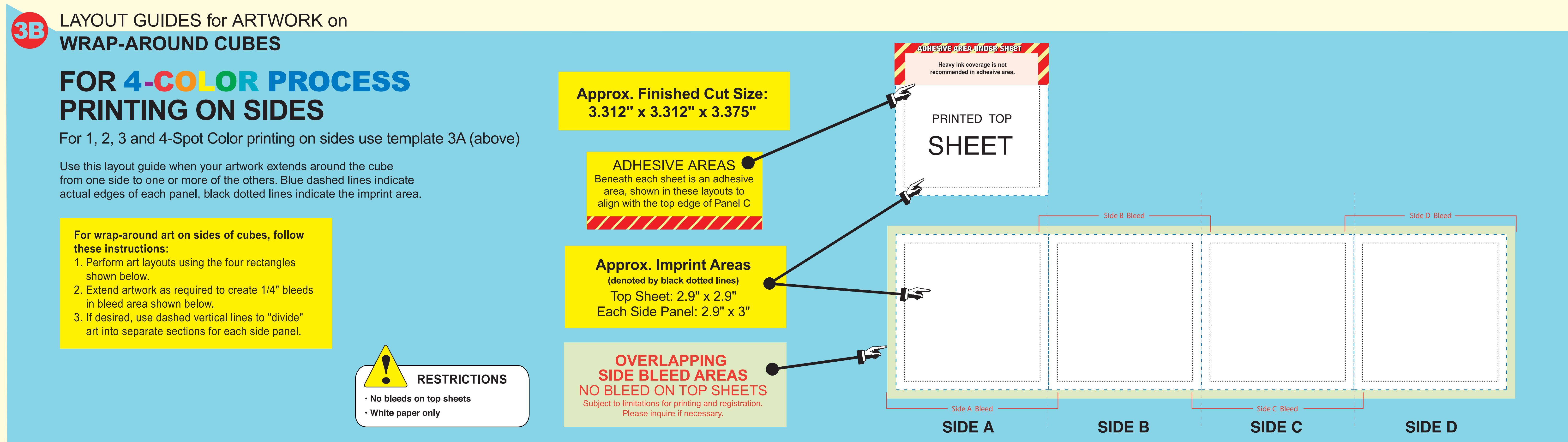
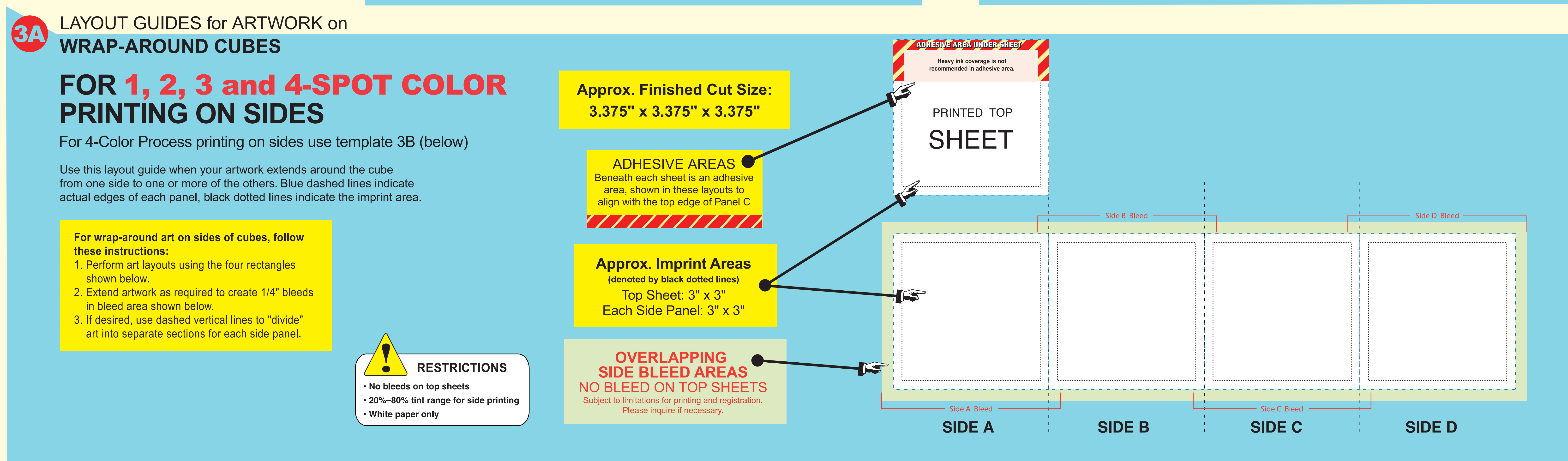
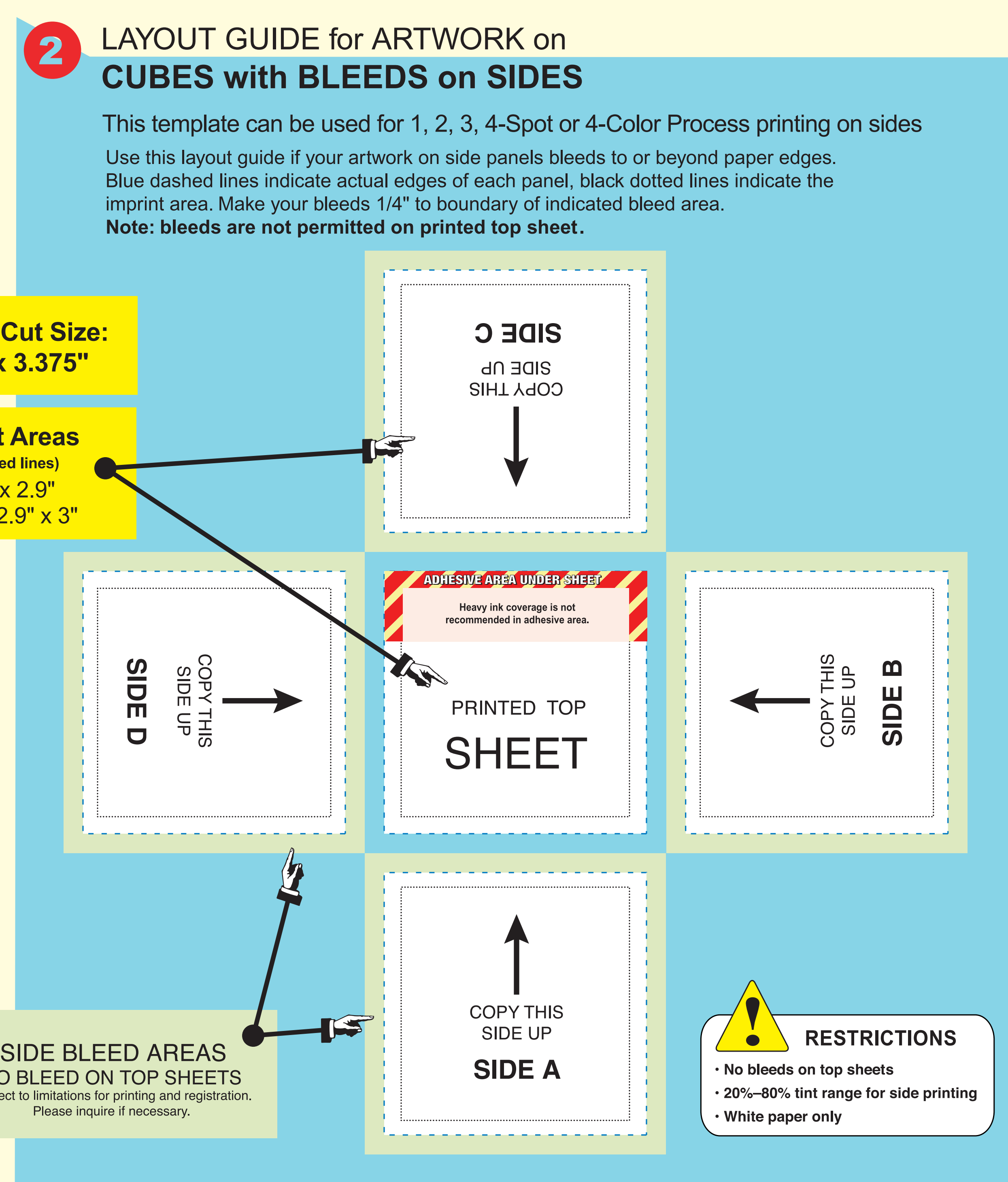
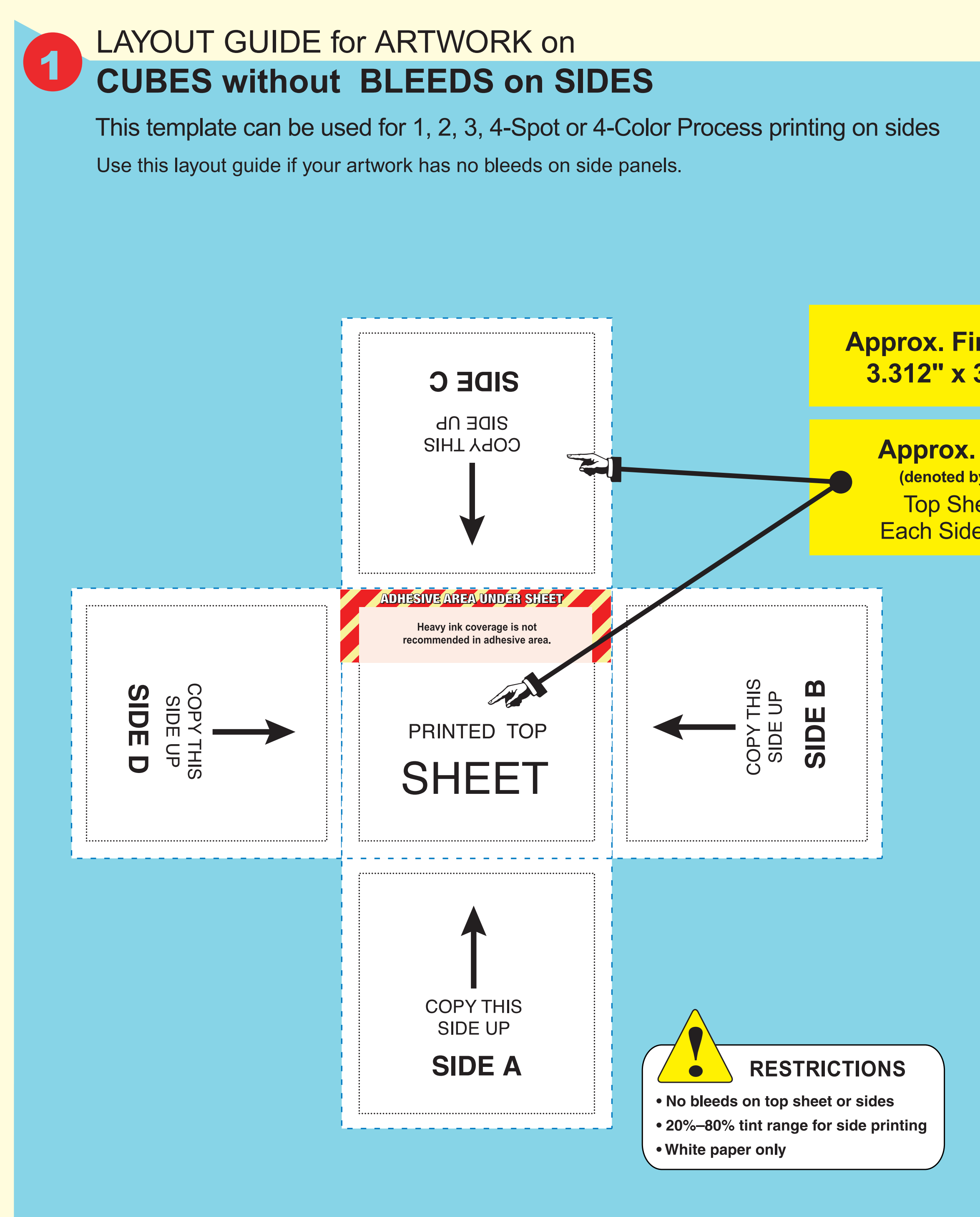




## Promotional Products Artwork Template Post-it® Notes Cube: C900

### GENERAL INSTRUCTIONS

1. Please give us your name and any known order details in the box above/left.
2. Create or locate your artwork in the top layer. Note: some other layers are non-printing layers and will not appear on any proofs you print.
- TIP: Hide/show the non-printing layers as needed during layout work; please do not delete the non-printing layers prior to saving file.
3. All guides and dimensions shown here are at 100%
4. Convert all text to curves (outlines) before saving file. We also request that fonts be supplied with your file.
- TIP: Even if you convert text, your font files may be needed for revisions we might make before production, so please send them with your art.
5. If any bitmap images are placed in this file, resulting in a "metafile" please do not modify the placed bitmap here. Also, be sure to "link" the file rather than parse (rasterize) it into this file, and also send the bitmap file together with this file.
6. Color swatches for 3M standard inks, papers, etc. can be downloaded at: [www.3M.com/templates](http://www.3M.com/templates). The swatches make it easy for you to apply the standard colors to your product design.
- NOTE: You are not limited to the 3M standard ink colors. Paper and product colors are for design use only and need to be deleted or moved to a non-printing layer prior to delivering final art to 3M.
7. Do NOT perform any trapping.
8. Please give your completed file a name that helps us identify it. (Examples: "Pepsicube.eps" or "PO#123.eps" ... not "notepads.eps" or "Untitled" )



Template: #C900

Issue Date: February 12, 2008 (Supersedes: January 1, 2004)

Note: Be sure to check our website for updated editions.

Go to: [www.3M.com/templates](http://www.3M.com/templates)

Need tech support?  
Refer to our "Before You Begin" PDF document.

